

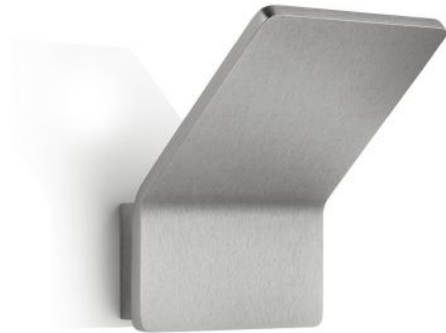


Knapstein


ANN-1

Oberfläche

- nickel
- white



Technical details

Country of Manufacture	 Germany
Manufacturer	Knapstein
Designer	Knapstein
protection	IP20
Scope of delivery	LED
voltage suitability	230 - 240 Volt
Depth in cm	10
material	metal
dimming	dimmable with a trailing edge dimmer and with a leading edge dimmer
Wattage	10 W
LED	inclusive
Colour Rendering Index	>90
Luminous flux in lm	850
Color temperature in Kelvin	2,700 extra warm white
bulb exchange	at the manufacturer / at the factory
Dimensions	H 13 cm B 10 cm

Description

The Knapstein ANN-1 wall lamp emits indirect light to the wall behind it. The lamp is 10 cm wide and 12.5 cm high. It is 10 cm deep in total. The ANN-1 is available in matt nickel and white. The integrated LED has a colour temperature of 2,700 Kelvin extra warm white and can be dimmed on site with a leading or trailing edge phase dimmer. In addition to this wall light, the ANN-2 with a width of 15 cm and a height of 18.5 cm is also offered from the series.