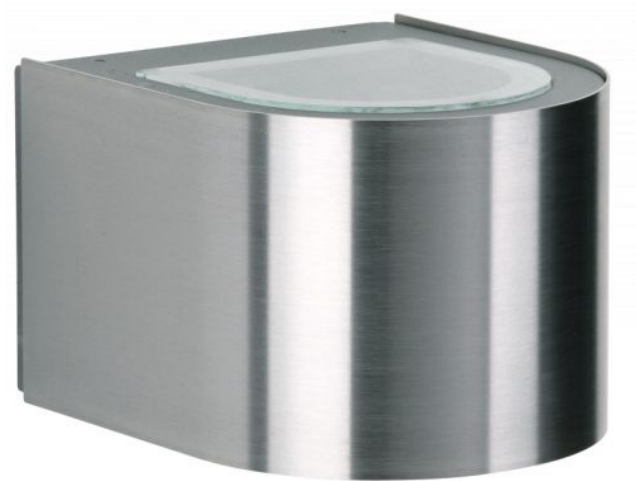





Albert

Wall Spotlight 2337



Technical details

Country of Manufacture	 Germany
Manufacturer	Albert
protection	IP44
Scope of delivery	LED
voltage suitability	230 - 240 Volt
material	aluminum, Borosilicate glass, stainless Steel
dimming	on site dimmable with a trailing edge dimmer
LED	inclusive
Colour Rendering Index	80 - 89
Luminous flux in lm	660
Color temperature in Kelvin	3,000 warm white
bulb exchange	on site itself
system performance	2 x 3 Watt
Dimensions	H 10 cm B 12 cm L 15 cm

Description

The Albert 2337 wall spotlight is made of stainless steel and corrosion-resistant cast aluminium. This lamp is 15 cm long, 12 cm wide and 9.5 cm high. The wall lamp with 2-sided light emission, wide at the top and bottom, has a bulb cover made of borosilicate glass. The 2337 wall spotlight by the German manufacturer Albert is suitable for outdoor use and comes with a mounting plate. The lamp has a replaceable LED bulb.