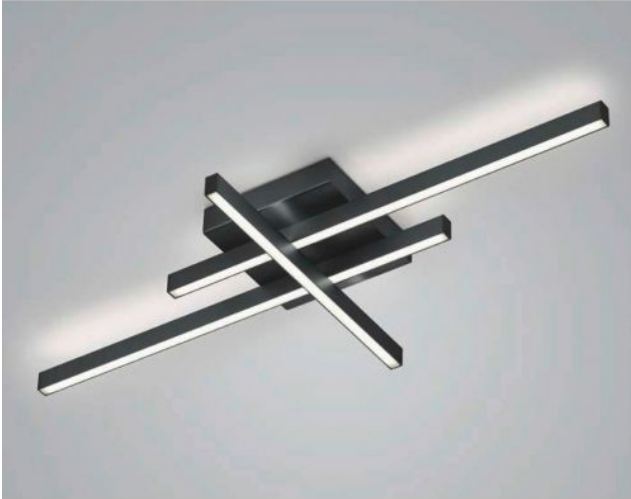


# Knapstein


## FELI

### Oberfläche

- nickel
- black



## Technical details

<b>Country of Manufacture</b>	 Germany
<b>Manufacturer</b>	Knapstein
<b>Designer</b>	Knapstein
<b>Year of design</b>	2022
<b>protection</b>	IP20
<b>Scope of delivery</b>	LED
<b>voltage suitability</b>	230 - 240 Volt
<b>material</b>	metal
<b>dimming</b>	dimmable with a trailing edge dimmer and with a leading edge dimmer
<b>Wattage</b>	51 W
<b>LED</b>	inclusive
<b>Colour Rendering Index</b>	>90
<b>Luminous flux in lm</b>	5,812
<b>Color temperature in Kelvin</b>	2,700 extra warm white
<b>bulb exchange</b>	at the manufacturer / at the factory
<b>Dimensions</b>	H 7 cm   B 42 cm   L 90 cm

## Description

The Knapstein FELI ceiling light consists of two horizontal rods and one vertically arranged rod. The ceiling lamp emits its light both upwards and downwards. The light emitted upwards also creates a uniform lighting effect on the ceiling. The FELI has a total length of 90 cm and a width of 42 cm. Knapstein offers the ceiling light in the surfaces matt nickel and black. The lamp is operated with a powerful, dimmable LED. The LED has a colour temperature of 2,700 Kelvin extra warm white.