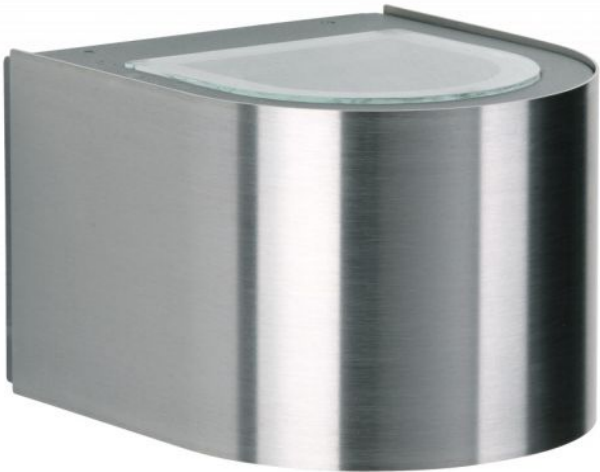



# Albert

## Wall Spotlight 2337



### Technical details

<b>País de la Fabricación</b>	 Alemania
<b>fabricante</b>	Albert
<b>protección</b>	IP44
<b>Volumen de suministro</b>	LED
<b>entrada de tensión</b>	230 - 240 Volt
<b>material</b>	acero Inoxidable, aluminio, vidrio borosilicato
<b>Atenuación</b>	Regulable en el sitio con control de fase inversa
<b>LED</b>	incluyendo
<b>Indice de reproduccion cromatica</b>	80 - 89
<b>El flujo luminoso en lm</b>	660
<b>Temperatura de color en grados Kelvin</b>	3.000 blanco cálido
<b>reemplazo de la bombilla:</b>	en el sitio mismo
<b>El rendimiento del sistema</b>	2 x 3 Watt
<b>Dimensions</b>	H 10 cm   B 12 cm   L 15 cm

### Descripción

The Albert 2337 wall spotlight is made of stainless steel and corrosion-resistant cast aluminium. This lamp is 15 cm long, 12 cm wide and 9.5 cm high. The wall lamp with 2-sided light emission, wide at the top and bottom, has a bulb cover made of borosilicate glass. The 2337 wall spotlight by the German manufacturer Albert is suitable for outdoor use and comes with a mounting plate. The lamp has a replaceable LED bulb.