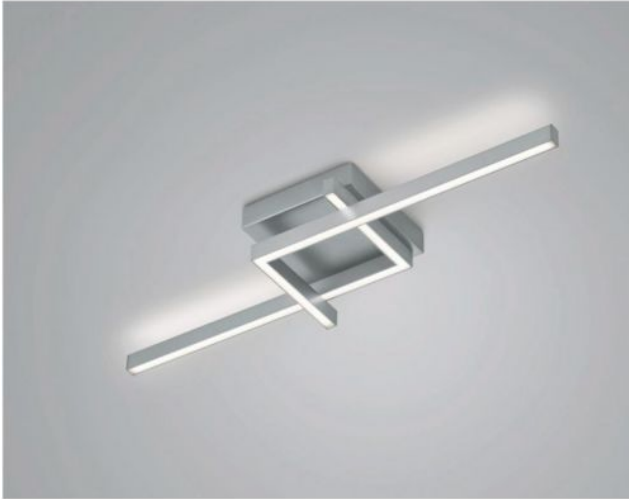


Knapstein


FRIDA-80

Oberfläche

- níquel
- negro



Technical details

País de la Fabricación	 Alemania
fabricante	Knapstein
diseñador	Knapstein
año	2022
protección	IP20
Volumen de suministro	LED
entrada de tensión	230 - 240 Volt
material	metal
Atenuación	dimnable con control de fase inversa y con reguladores de control de fase
Potencia en vatios	36 W
LED	incluyendo
Indice de reproduccion cromatica	>90
El flujo luminoso en lm	4.119
Temperatura de color en grados Kelvin	2.700 extra blanco cálido
reemplazo de la bombilla:	en el fabricante / en la fabrica
Dimensions	H 10 cm B 24 cm L 84 cm

Descripción

The Knapstein FRIDA-80 emits light upwards and downwards at the same time, so that a uniform lighting impression is also created across the ceiling. The ceiling lamp is 84 cm long and 24 cm wide. Its height is 10 cm in total. The FRIDA-80 is available in the surfaces matt nickel and black. A powerful, dimmable LED with a colour temperature of 2,700 Kelvin extra warm white is included. The FRIDA-110 with a length of 112 cm is also available from the series.