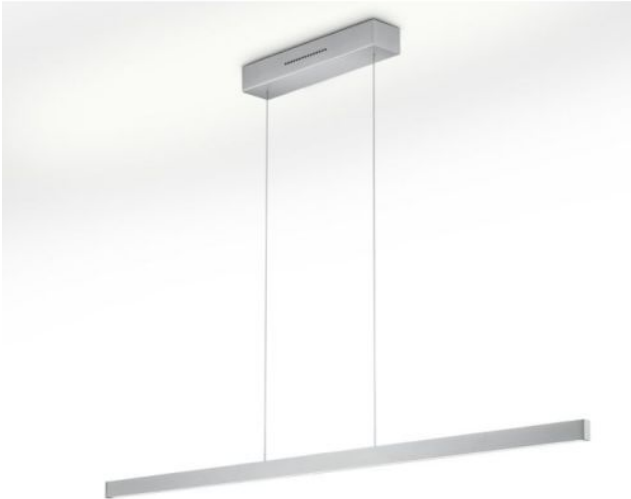


Knapstein


LINDA-72

Oberfläche

- níquel
- bronce
- negro



Technical details

País de la Fabricación	 Alemania
fabricante	Knapstein
año	2023
material	brass
ajuste de altura	altura ajustable
Potencia en vatios	34 W
LED #	inclusive
Indice de reproduccion cromatica	>90
El flujo luminoso en lm	4004
Temperatura de color en grados Kelvin	2.200-3.000
protección	IP20
Volumen de suministro	LED
entrada de tensión	230 - 240 Volt
Atenuación	control por movimientos
reemplazo de la bombilla:	en el fabricante / en la fabrica
altura total	73 - 180 cm
Dimensions	L 72 cm

Descripción

The Knapstein LINDA-72 pendant lamp has a length of 72 cm. By pulling or lifting the lamp itself, the total height of the lamp can be adjusted between 73 cm and 180 cm. The lamp can also be suspended at an angle. The pendant lamp emits its light simultaneously upwards and downwards. The uplight and downlight can be switched and dimmed separately by gesture control. The light colour can also be adjusted separately for the uplight and downlight to a warmer tone (from a colour temperature of 3,000 Kelvin warm white to 2,200 Kelvin extra warm white). All dimming and light colour settings are saved via the memory function and are automatically reset when the light is next switched on.

The sensor area for gesture control is located centrally on the lamp. The lamp is switched on or off by a wiping movement of the hand in the sensor area. To change the light intensity, the hand is held longer in the sensor area. The desired light colour can then be set by holding the hand in the sensor area again for a longer time. The LINDA-72 is available in different surfaces. There are no visible screws in the ceiling canopy, because of a magnetic holder.