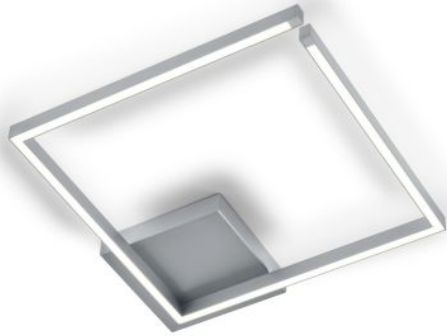


# Knapstein


## YOKO-Q500



### Oberfläche

- níquel
- negro

### Technical details

<b>País de la Fabricación</b>	 Alemania
<b>fabricante</b>	Knapstein
<b>año</b>	2024
<b>material</b>	Acryl, Metall
<b>Atenuación</b>	dimmable con control de fase inversa y con reguladores de control de fase
<b>Potencia en vatios</b>	61 W
<b>LED #</b>	inclusive
<b>Indice de reproduccion cromatica</b>	>90
<b>El flujo luminoso en lm</b>	6.996
<b>Temperatura de color en grados Kelvin</b>	2.700 blanco cálido extra
<b>protección</b>	IP20
<b>Volumen de suministro</b>	LED
<b>entrada de tensión</b>	230 - 240 Volt
<b>Dimensions</b>	H 6,8 cm   B 50 cm   L 50 cm

### Descripción

The Knapstein YOKO-Q500 ceiling lamp is 6.8 cm high and has a side length of 50 cm. The light rods of this lamp are 1.8 cm wide and 2.8 cm high. Thanks to its design, the lamp not only emits direct light downwards into the room, but also indirect light onto the ceiling. This creates balanced lighting, the brightness of which can be adjusted as required. The integrated, dimmable LED has a colour temperature of 2,700 Kelvin extra warm white. The Knapstein YOKO-Q500 is available in different surfaces.