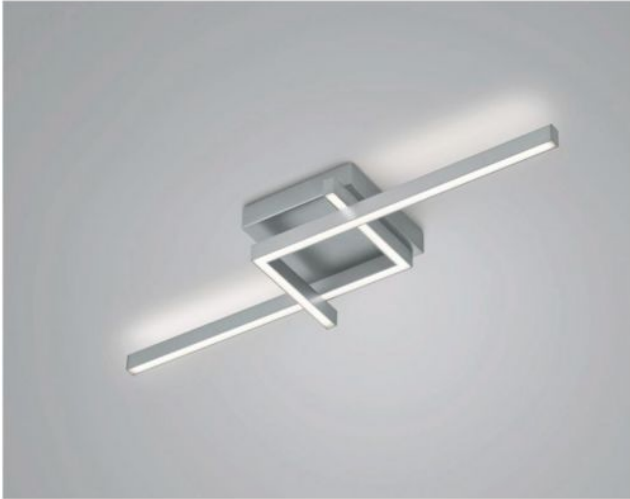


Knapstein


FRIDA-80

Oberfläche

- nickel
- noir



Technical details

| | |
|--|---|
| Pays de fabrication |  Allemagne |
| fabricant | Knapstein |
| concepteur | Knapstein |
| année | 2022 |
| protection | IP20 |
| Contenu de la livraison | LED |
| aptitude de tension | 230 - 240 Volt |
| matériel | métal |
| atténuation | gradable avec variateur à coupure de phase et à commande de phase |
| Puissance en Watt | 36 W |
| LED | y compris |
| Indice de rendu des couleurs | >90 |
| Flux lumineux en lm | 4.119 |
| La température de couleur en Kelvin | 2.700 extra blanc chaud |
| remplacement des ampoules : | chez le fabricant / a l'usine |
| Dimensions | H 10 cm B 24 cm L 84 cm |

Description

The Knapstein FRIDA-80 emits light upwards and downwards at the same time, so that a uniform lighting impression is also created across the ceiling. The ceiling lamp is 84 cm long and 24 cm wide. Its height is 10 cm in total. The FRIDA-80 is available in the surfaces matt nickel and black. A powerful, dimmable LED with a colour temperature of 2,700 Kelvin extra warm white is included. The FRIDA-110 with a length of 112 cm is also available from the series.