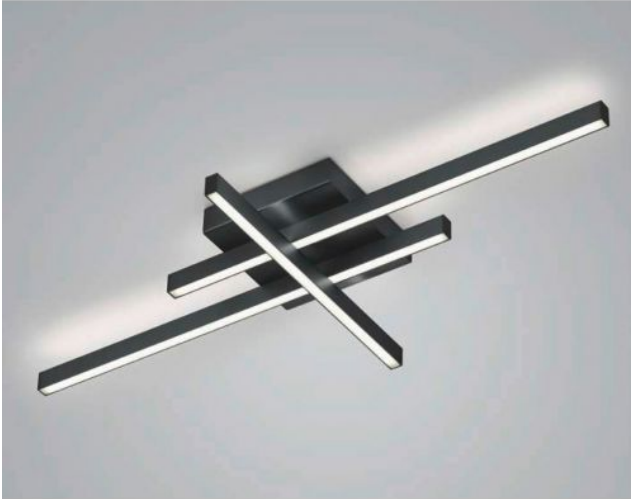


# Knapstein


## FELI

### Oberfläche

- nickel
- noir



## Technical details

<b>Pays de fabrication</b>	 Allemagne
<b>fabricant</b>	Knapstein
<b>concepteur</b>	Knapstein
<b>année</b>	2022
<b>protection</b>	IP20
<b>Contenu de la livraison</b>	LED
<b>aptitude de tension</b>	230 - 240 Volt
<b>matériel</b>	métal
<b>atténuation</b>	gradable avec variateur à coupure de phase et à commande de phase
<b>Puissance en Watt</b>	51 W
<b>LED</b>	y compris
<b>Indice de rendu des couleurs</b>	>90
<b>Flux lumineux en lm</b>	5.812
<b>La température de couleur en Kelvin</b>	2.700 extra blanc chaud
<b>remplacement des ampoules :</b>	chez le fabricant / a l'usine
<b>Dimensions</b>	H 7 cm   B 42 cm   L 90 cm

## Description

The Knapstein FELI ceiling light consists of two horizontal rods and one vertically arranged rod. The ceiling lamp emits its light both upwards and downwards. The light emitted upwards also creates a uniform lighting effect on the ceiling. The FELI has a total length of 90 cm and a width of 42 cm. Knapstein offers the ceiling light in the surfaces matt nickel and black. The lamp is operated with a powerful, dimmable LED. The LED has a colour temperature of 2,700 Kelvin extra warm white.